

Mounting Types

Side Frame Mounting Types

- › In Rebate
- › Wall Mounted On and Off-Seating
- › Channel Side Wall Mounted

Invert Frame Mounting Types

- › In Rebate
- › Wall Mounted
- › Floor Mounted
- › Flexible IBS Ground Seal Only

Accessories

Vertical Log Compression

- › Type 1: Integral In Frame
- › Type 2: External To Frame

Lifting Tools

- › Lifting Tools
- › Hook Lifting Beams
- › Semi-Automatic Lifting Beams

Storage Solutions

- › Pallets
- › Racks
- › Boxes



Flood Protection



Water Control



Logistics-Systems



IBS GROUP

Our Production Facilities

- › IBS Technics GmbH Thierhaupten
- › IBS Technics s.r.o. Rotava
- › IBS Engineered Products Ltd, Doncaster, UK

About Us

- › International Engineering Company
- › 150 employees
- › 11,000 m² manufacturing facilities
- › global leader for mobile flood water protection
- › more than 4000 successfully completed projects

Our Performance

- › Global distribution
- › Development, design and construction
- › State of the art production
- › Modern machinery
- › International service structure

Our Markets

- › Europe
- › Middle East
- › North America
- › Australia
- › Asia

IIBSI GROUP

WWW.IBS-TECHNICS.DE

IBS Technics GmbH

Gemeindewald 6 · 86672 Thierhaupten · Germany
Tel.: + 49 (0) 8271 8176-0 · Fax: + 49 (0) 8271 8176-76
Mail: info@ibs-technics.de · Web: www.ibs-technics.de

IIBSI GROUP

WWW.IBSENGINEEREDPRODUCTS.CO.UK

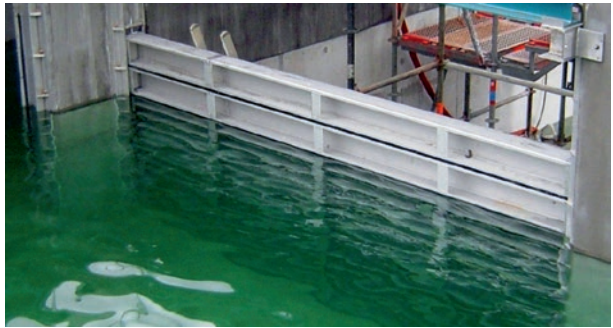
Unit 7 · Brunel Park · Off Blyth Road · Harworth
Doncaster · South Yorkshire · DN11 8NE
Phone: +44 1302 6300-15 · Fax-Nr.: +44 1302 6300-14
Mail: info@ibsengeeredproducts.co.uk · www.ibsengeeredproducts.co.uk

IBS Flow Control Stop Logs



- › Vast Product Range
- › Standard Solutions
- › Use In New and Existing Structures
- › Competitive Series Production
- › Extensive Experience

IIBSI GROUP
WWW.IBS-TECHNICS.DE



Stop Log Technique

Our Experience – Your Advantage

- › Qualified
- › Knowledgeable
- › Reliable
- › Flexible
- › International

Quality Standards

- › DIN
- › BSI
- › AWWA
- › EN 1090 Certification
- › Welder Certification

Lage Sizes Available

e.g. RWE Hydro Power Plant Hohenstein

- › Width = 8.400mm
- › Height = 7.300mm
- › Water Head = 7.300mm

Area of Application

- › Waste Water Treatment Plants
- › Industrial Effluent Plants
- › Canals / Waterways
- › Flood Defence
- › Retention Tanks
- › Pumping Stations
- › Hydro Power Plants
- › Drinking Water Plants
- › Sea Water Intakes



Our Products

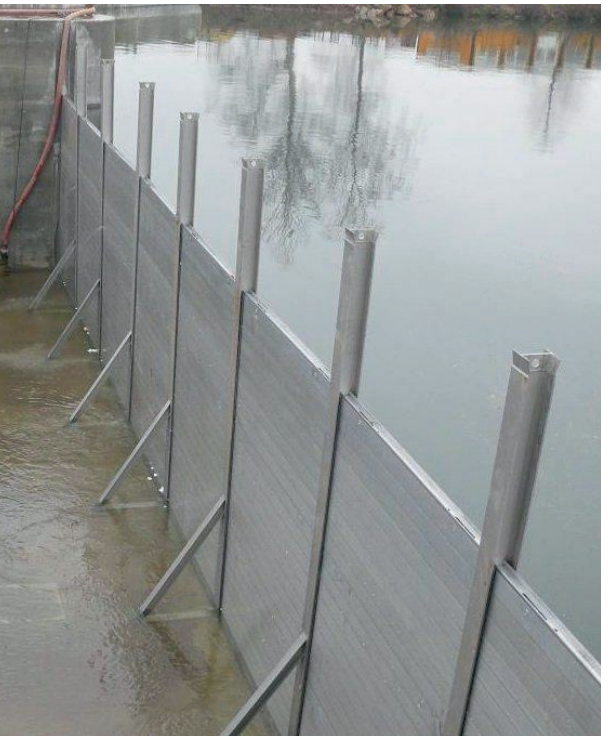
Stop Log Categories

- › IBS-DBV 50
- › IBS-DBV 100
- › IBS-DBV 150

Materials

- › Stainless Steel Grade SS304
- › Stainless Steel Grade SS316
- › Aluminium EN AW 6063 T66
- › Seals EPDM (Waste Water Resistant)
- › Seals Elastosil (KTW/WRAS Approved)
- › Further materials available upon request

Area of Appliaction	Stainless Steel	Aluminium
Inland Water	yes	yes
Grey Water	yes	yes
Waste Water	yes	limited
Sea Water	yes	limited
Drinking Water	yes	no
Reinforced Stop Log Solutions	no	yes
Log Mounted Sealing Techniques	no	yes



Sealing Techniques

Frame Mounted

- › Seals and Guides Frame Mounted
- › Double Lip Seal
- › High Performance Guides
- › On and Off-Seating Design
- › Uninterrupted Sealing Line

Log Mounted

- › Seals and Guides Log Mounted
- › Combination Profile Seal
- › High Performance Guides
- › On and Off-Seating Design
- › Excellent Seal Accessibility